

Back-up capacity Judicial department

Almere, Krimpen, Nieuwegein and Zoetermeer

archivolt architecten bv



An increasing need for additional, flexible cell capacity led to a study into the feasibility of constructing one or several additional pavilions to create a more or less universal solution for expanding the capacity of different locations.

pavilion essentially offers the entire programme required to house inmates, save for visitor facilities and a fitness room. The pavilion's facility services are provided by the main building. The pavilion has its own outdoor area.

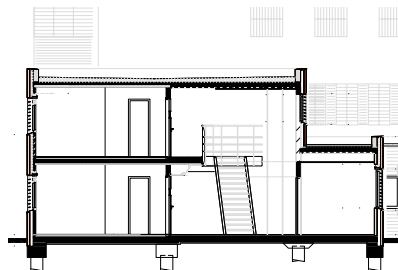
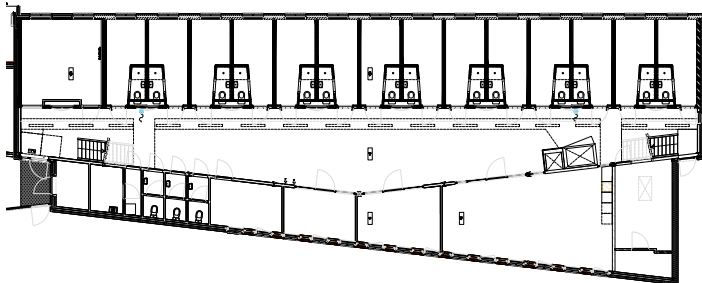
This study initially included 16 locations throughout the Netherlands. archivolt's basic design was selected to be developed for 7 locations. The varying contexts of these locations meant that the design had to be individualised for each site's specific needs.

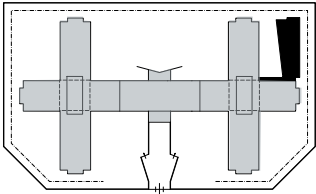
The logistical structure has been designed in such a way to guarantee that the inmates could potentially also use the complex's other facilities. The pavilion has two floors, with cells on one side of the structure, in a high, central, trapezoidal hallway. The other side of the pavilion, which has one floor, houses the recreational and sanitary facilities, the team room, storage space and engineering.

The original architects implemented the adjustments at three of these locations, and archivolt provided the sites of Almere, Zoetermeer, Nieuwegein and Krimpen aan den IJssel with customised plans. The basic designs are virtually identical for the first three locations, all of which have double-cross layouts.

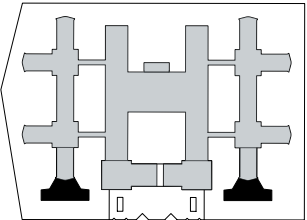
The Krimpen pavilions were designed to consist of two floors and were fitted with additional work and activity rooms. The pavilions at this location were designed to blend into the existing building as if the additional structures form part of the original concept. This contrasts with the other three locations, where the pavilion is visibly an extension of the original design, although the materialisation is quite similar.

The design was optimised for application at the Krimpen site, which has a so-called "corridor" layout. Two pavilions were realised here. The

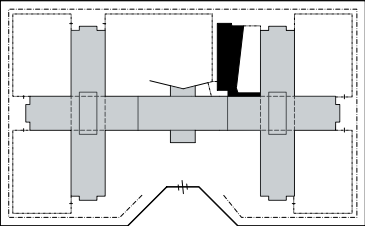




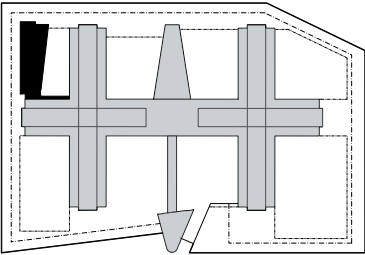
site Zoetermeer



site Krimpen aan den IJssel



site Almere



site Nieuwegein



Colofon

Closed penitentiary facility 5 x 30 cells
 Locations Almere, Krimpen a/d IJssel, Nieuwegein, Zoetermeer
 Client Government Buildings
 Agency integral assignment including construction and installations
 Plan preparation 2001 - 2002
 Execution 2002 - 2003
 Project architect Martin van Dort, with Frits Toben
 Employees Gerhard Venhuizen, Ben Otten, Gerard Versteeg, Eric Smook, Mark Ooteman